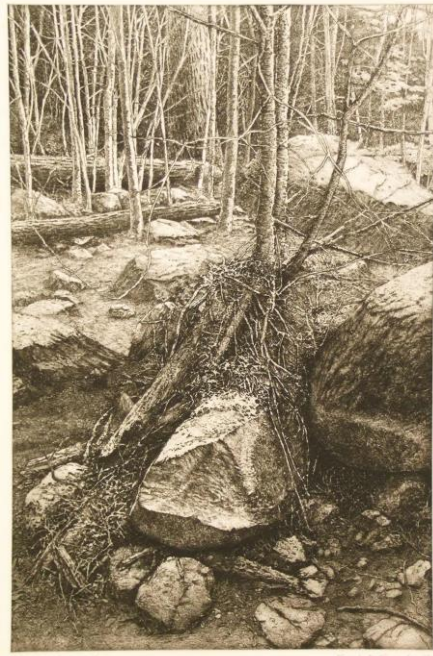


Museum Stories
January 6, 2021



Kenneth Kerslake, *Adirondack Spring*, 1985, Etching on paper, AP 37-1/4 x 24-7/8 in.
2001.001, Gift of Harvey K. Littleton

This week, Museum Stories explores the changing of the seasons. What does late winter and early spring look like? Take a few minutes to watch the short video.

LOOK

The artwork this week is called *Adirondack Spring* by Kenneth Kerslake. This picture is not colorful. It has lots of black and white lines to create the image. It is an etching. The design is drawn on a metal plate, which is then covered in ink. The plate and ink are pressed onto a paper, like a stamp, to make the picture.

Pretend you can step in to the picture. What do you see? There are lots of trees, but they do not have leaves. What time of year does this look like, when trees have no leaves? It looks like late winter, just before buds and leaves start growing on trees in the spring.

READ

This week, the book recommendation is *Little Blue Truck Springtime* by Alice Schertle and illustrated by Jill McElmurry. This book shows springtime in the animal world, when all kinds of new animal babies are born. Blue truck and the animals venture out into nature where they can see other signs of spring, like blooming flowers and trees sprouting new leaves. The book introduces the different names of baby animals with lift up flaps that reveal hidden surprises.

MAKE

Follow along with the video for instructions on how to make your own tree with leaves.